

GROWING TOGETHER

*With your help, our goal to
create a therapeutic, nature
area at Sanford Canton-
Inwood Medical Center can
become a reality.*

*Donations of all amounts will
be accepted. For suggested
donations, please see inside of
this brochure.*

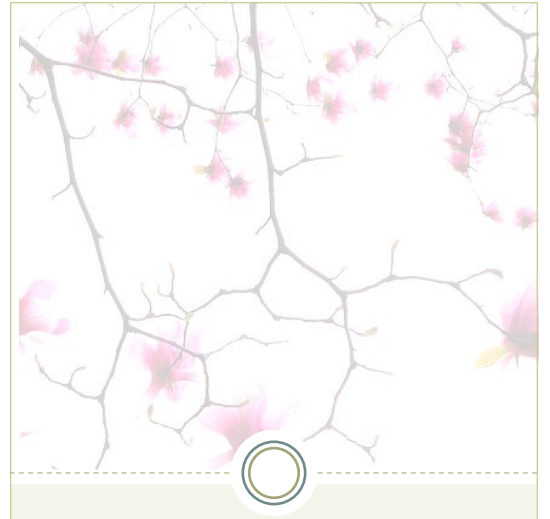
*Please make checks payable
to Canton-Inwood Area
Health Foundation (CIAHF).*

*For more information,
contact Scott Larson at (605)
764-1490.*



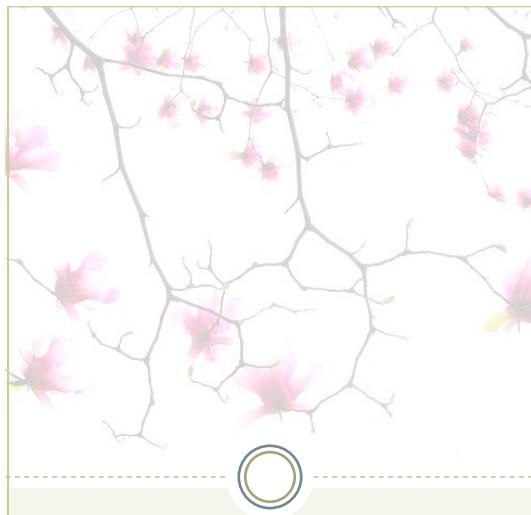
440 N Hiawatha Dr.
Canton, SD 57013

PHONE: (605) 764-1400



The Hiawatha Healing Garden at Sanford Canton-Inwood Medical Center

*"To Plant A Garden Is To
Believe In Tomorrow"*
Audrey Hepburn



Reducing Stress, Improving Health

Spending long hours in a hospital can be stressful. Nearby access to natural landscape or a garden has been proven to enhance people's ability to deal with stress and thus potentially improve health outcomes.

The Hiawatha Healing Garden at Sanford Canton-Inwood Medical Center will be an area for relaxation and rejuvenation available to patients and their families, residents of Hiawatha Heights Assisted Living, staff and the community.

DONATION LEVELS

Platinum Donors—\$5,000 and above

Gold Donors - \$1,000—\$4,999

Silver Donors—\$500—\$999

Bronze Donors—\$100—\$499

Platinum, Gold, Silver and Bronze donors will be recognized on a plaque at the garden entrance.

Donors may also choose to donate toward specific items. For example, you may sponsor an engraved bench with a donation of \$750. Or, if a business or group is interested in sponsoring larger features, such as the waterfall or pergola, we would be happy to discuss donation amounts and recognition options.

BUY A BRICK

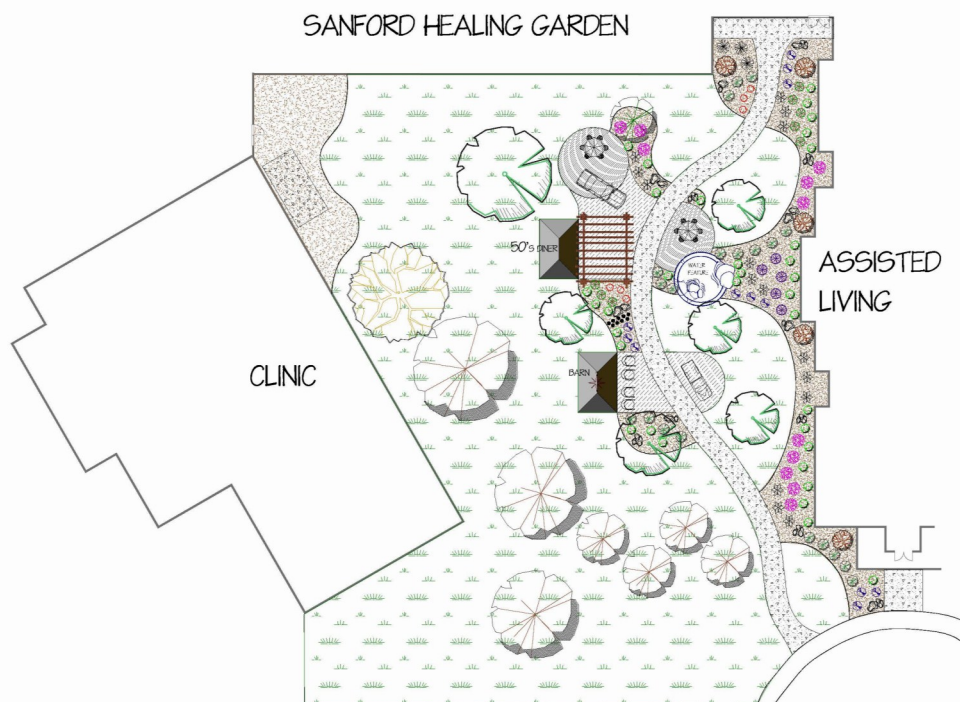
Purchase an engraved brick. Bricks will be used to create the path and patio areas throughout the garden.

Individuals—\$60

Groups/Organizations—\$100

THANK YOU

Gardens provide psychological, social, physical, emotional and spiritual benefits. Thank you for your interest and support in creating this dedicated space for refuge and restoration at Sanford Canton-Inwood Medical Center.



Proposed design for Sanford Canton-Inwood Healing Garden